

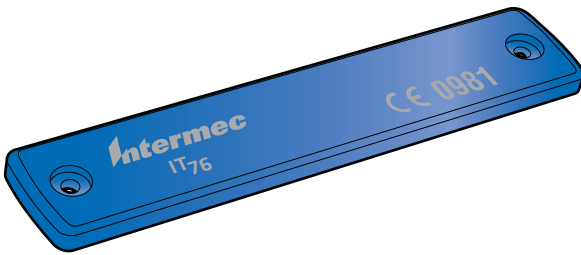


# IT76

## Durable Asset Memory Tag Information Sheet

Intermec's IT76 Durable Asset Memory tag is a passive UHF RFID tag designed for superior performance on metal containers. The EPC Gen 2 tag combines an impressive range with a rugged, yet compact, package designed for harsh industrial applications. The antenna design provides consistent UHF range performance in ETSI band regions.

To order additional RFID tags, contact your local Intermec sales representative.



### *IT76 Durable Asset Memory Tag*

## Installing the Tags

You can attach the tag using screws, double-sided adhesive strips, or any other method appropriate for your RFID system. Each tag has two mounting holes for M3 (#4) screws (not included). If you are using double-sided adhesive strips, Intermec recommends using 3M 4646 tape that is 25 mil thick.



Caution

**Use caution when tightening hardware to avoid damaging the tag housing.**

# Tag Specifications

The table below shows the tag specifications for the IT76 tag.

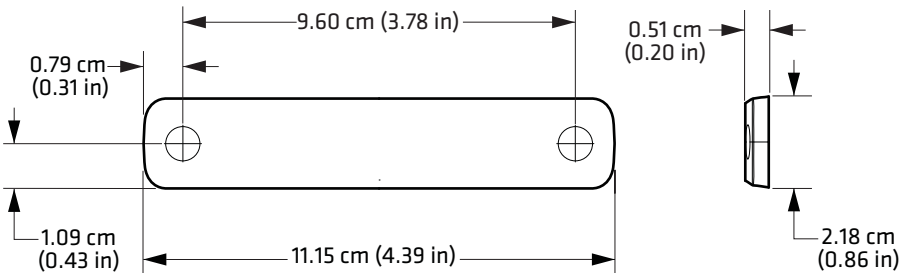
## IT76 Durable Asset Memory Tag Specifications

Specification	Description
Size	2.18 x 11.15 x 0.51 cm (0.86 x 4.39 x 0.20 in)
Frequency	865 MHz
Operating temperature	-40°C to 85°C (-40°F to 185°F)
Read range (typical)	4.57 m (15 ft) when mounted on a metal container that is 30.48 x 30.48 cm (12 x 12 in) or larger.
Silicon type	Monza 4QT with 512 bits of user memory, 128 bits of EPC memory, and serialized TID. For more information about the tag chip capabilities and programming, see the Impinj web site at <a href="http://www.impinj.com/products/monza4tagchips.aspx">http://www.impinj.com/products/monza4tagchips.aspx</a> .



**Note:** Read ranges shown represent typical performance using a reader system with 4 Watts EIRP. Actual range performance may vary depending on power output and environmental factors.

## Tag Dimensions



# Where To Go for More Information

Visit the Intermecc web site at [www.intermec.com](http://www.intermec.com) to download PDF versions of our current manuals. To order printed versions of the Intermecc manuals, contact your local Intermecc representative or distributor.

Visit the Intermecc technical knowledge base (Knowledge Central) at [intermec.custhelp.com](http://intermec.custhelp.com) to review technical information or to request technical support for your Intermecc product.

# Patent Information

This product is covered by one or more of the following patents:

5,030,807; 5,055,659; 5,479,160; 5,521,601; 5,528,222; 5,538,803; 5,550,547; 5,552,778; 5,554,974; 5,563,583; 5,565,847; 5,606,322; 5,606,323; 5,673,037; 5,680,106; 5,682,143; 5,729,201; 5,736,929; 5,739,754; 5,767,789; 5,771,021; 5,786,626; 5,812,065; 5,821,859; 5,825,329; 5,826,328; 5,831,532; 5,874,902; 5,889,489; 5,909,176; 5,912,632; 5,939,984; 5,942,987; 5,962,837; 5,966,082; 5,972,156; 5,995,006; 5,995,019; 6,028,564; 6,032,127; 6,056,199; 6,061,614; 6,078,251; 6,078,259; 6,097,347; 6,100,804; 6,104,281; 6,104,291; 6,114,962; 6,118,379; 6,121,878; 6,121,880; 6,130,612; 6,140,146; 6,147,604; 6,147,606; 6,163,260; 6,166,638; 6,172,596; 6,177,872; 6,201,474; 6,215,401; 6,215,402; 6,236,223; 6,239,703; 6,243,013; 6,246,326; 6,249,227; 6,259,408; 6,275,157; 6,278,413; 6,280,544; 6,281,794; 6,285,342; 6,288,629; 6,294,997; 6,294,998; 6,320,509; 6,329,915; 6,357,662; 6,360,208; 6,366,260; 6,369,711; 6,371,375; 6,400,274; 6,404,325; 6,412,086; 6,422,476; 6,441,740; 6,518,885; 6,525,648; 6,566,850; 6,593,845; 6,610,379; 6,768,414; 6,784,789; 6,794,000; 6,812,841; 6,816,063; 6,830,181; 6,838,989; 6,859,190; 6,906,615; 6,919,793; 6,944,424; 7,075,413; 7,103,087; 7,106,196; 7,117,374; 7,121,467; 7,123,129; 7,158,046; 7,158,091; 7,298,268; 7,274,297; 7,215,248; 7,274,297; 7,298,268; 7,323,977; 7,338,914.

There may be other patents pending.



Worldwide Headquarters  
6001 36th Avenue West  
Everett, Washington 98203  
U.S.A.

tel 425.348.2600

fax 425.355.9551

[www.intermec.com](http://www.intermec.com)

© 2010 Intermec Technologies  
Corporation. All rights reserved.



## IT76 Durable Asset Memory Tag Information Sheet



P/N 931-080-001