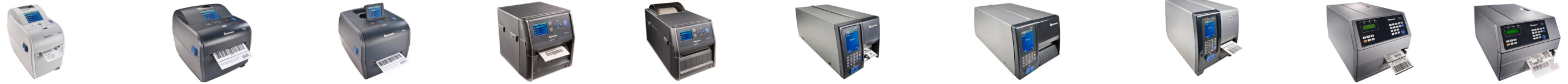


Honeywell Fixed Printer Comparison



Printer Type	DESKTOP PRINTERS						INDUSTRIAL PRINTERS			
PRODUCT MODEL	PC23d	PC43d	PC43t	PD43c	PD43	PM23c	PM43c	PM43	PX4i	PX6i
Product Description	2" Direct Thermal Desktop Printer	4" Direct Thermal Desktop Printer	4" Thermal Transfer Desktop Printer	4" Direct Thermal or Thermal Transfer Light Industrial Printer	4" Direct Thermal or Thermal Transfer Light Industrial Printer	2" Direct Thermal or Thermal Transfer Mid-Range Industrial Printer	4" Direct Thermal or Thermal Transfer Mid-Range Industrial Printer	4" Direct Thermal or Thermal Transfer Mid-Range Industrial Printer	4" Direct Thermal or Thermal Transfer High Performance Industrial Printer	6" Direct Thermal or Thermal Transfer High Performance Industrial Printer
MEMORY										
Standard	128 MB Flash, 128 MB RAM	128 MB Flash, 128 MB RAM	128 MB Flash, 128 MB RAM	128 MB Flash, 128 MB RAM	128 MB Flash, 128 MB RAM	128 MB Flash, 128 MB SDRAM	128 MB Flash, 128 MB SDRAM	128 MB Flash, 128 MB SDRAM	16 MB Flash, 32 MB SDRAM	16 MB Flash, 32 MB SDRAM
Expandable	Yes, via USB Thumbdrive	Yes, via USB Thumbdrive	Yes, via USB Thumbdrive	Yes, via USB Thumbdrive	Yes, via USB Thumbdrive	Yes, via USB Thumbdrive	Yes, via USB Thumbdrive	Yes, via USB Thumbdrive	Yes, via USB Thumbdrive or CompactFlash Card	Yes, via USB Thumbdrive or CompactFlash Card
USER INTERFACE										
Display & Input	2.3" Color Display with 8 Buttons and Print/Feed Button, or Intuitive Icons with Print/Feed Button	2.3" Color Display with 8 Buttons and Print/Feed Button, or Intuitive Icons with Print/Feed Button	2.3" Color Display with 8 Buttons and Print/Feed Button, or Intuitive Icons with Print/Feed Button	2.3" Color Display with 8 Buttons and Print/Feed Button, or Intuitive Icons with Print/Feed Button	2.3" Color Display with 8 Buttons and Print/Feed Button, or Intuitive Icons with Print/Feed Button	3.5" Color Touchscreen Display or Intuitive Icons	3.5" Color Touchscreen Display or Intuitive Icons	3.5" Color Touchscreen Display or Intuitive Icons	Two-Line Text Display	Two-Line Text Display
Audio	User Configurable Audio Sounds with Volume Levels	User Configurable Audio Sounds with Volume Levels	User Configurable Audio Sounds with Volume Levels	User Configurable Audio Sounds with Volume Levels	User Configurable Audio Sounds with Volume Levels	Full Numeric Keypad & Touchscreen, or Single Button (Icon Models)	Full Numeric Keypad & Touchscreen, or Single Button (Icon Models)	Full Numeric Keypad & Touchscreen, or Single Button (Icon Models)	Full or Numeric Keypad, Function Keys	Full or Numeric Keypad, Function Keys
PRINT SPECIFICATIONS										
Max. Print Speed	203 mm/s (8 ips)	203 mm/s (8 ips)	203 mm/s (8 ips)	203 mm/s (8 ips)	203 mm/s (8 ips)	300 mm/s (12 ips)	300 mm/s (12 ips)	300 mm/s (12 ips)	300 mm/s (12 ips)	225 mm/s (9 ips)
Resolution	8 dots/mm (203 dpi), 11.8 dots/mm (300 dpi)	8 dots/mm (203 dpi), 11.8 dots/mm (300 dpi)	8 dots/mm (203 dpi), 11.8 dots/mm (300 dpi)	8 dots/mm (203 dpi), 11.8 dots/mm (300 dpi)	8 dots/mm (203 dpi), 11.8 dots/mm (300 dpi)	8 dots/mm (203 dpi), 11.8 dots/mm (300 dpi), 16 dots/mm (406 dpi)	8 dots/mm (203 dpi), 11.8 dots/mm (300 dpi), 16 dots/mm (406 dpi)	8 dots/mm (203 dpi), 11.8 dots/mm (300 dpi), 16 dots/mm (406 dpi)	8 dots/mm (203 dpi), 11.8 dots/mm (300 dpi), 16 dots/mm (406 dpi)	8 dots/mm (203 dpi), 11.8 dots/mm (300 dpi), 16 dots/mm (406 dpi)
Max. Print Width	56 mm (2.2 in)	106 mm (4.17 in)	106 mm (4.17 in)	104 mm (4.09 in)	104 mm (4.09 in)	63 mm (2.5 in)	115 mm (4.52 in)	115 mm (4.52 in)	110 mm (4.3 in)	167 mm (6.5 in)
MEDIA CHARACTERISTICS										
Media Width	15 to 60 mm (0.59 to 2.36 in)	19 to 118 mm (0.75 to 4.65 in)	19 to 118 mm (0.75 to 4.65 in)	19 to 118 mm (0.75 to 4.65 in)	19 to 118 mm (0.75 to 4.65 in)	19 to 68 mm (0.75 to 2.7 in)	19 to 114 mm (0.75 to 4.5 in)	19 to 114 mm (0.75 to 4.5 in)	26 to 120 mm (1.0 to 4.72 in)	76 to 170 mm (3.0 to 6.69 in)
Media Length	6.4 mm to 172 cm (0.25 in to 68 in)	6.4 mm to 172 cm (0.25 in to 68 in)	6.4 mm to 172 cm (0.25 in to 68 in)	6.4 to 172.7 mm (0.25 to 68.0 in)	6.4 to 172.7 mm (0.25 to 68.0 in)	6.4 mm to 4.8 m (0.25 in to 15.7 ft)	6.4 mm to 4.8 m (0.25 in to 15.7 ft)	6.4 mm to 4.8 m (0.25 in to 15.7 ft)	6.4 mm to 4.9 m (0.25 in to 13.4 ft)	6.4 mm to 4.9 m (0.25 in to 13.4 ft)
Media Thickness	2.4 to 7.8 mil ^①	2.4 to 7.8 mil ^①	2.4 to 7.8 mil ^①	2.4 to 7.8 mil	2.4 to 7.8 mil	2.4 to 10.4 mil	2.4 to 10.4 mil	2.4 to 10.4 mil	2.4 to 10.0 mil	2.4 to 10.0 mil
Label Roll Max. Diameter (OD)	127 mm (5.0 in)	127 mm (5.0 in)	127 mm (5.0 in)	152 mm (6.0 in)	213 mm (8.375 in)	152 mm (6 in) or 213 mm (8.38 in) ^②	152 mm (6 in) or 213 mm (8.38 in) ^④	213 mm (8.38 in)	213 mm (8.38 in)	213 mm (8.38 in)
Ribbon Max. Diameter (OD)	N/A	N/A	68 mm (2.67 in)	68 mm (2.68 in)	68 mm (2.68 in)	61 mm (2.40 in)	61 mm (2.40 in)	80 mm (3.15 in)	80 mm (3.15 in)	80 mm (3.15 in)
Ribbon Max. Length	N/A	N/A	300 m (984 ft)	300 m (984 ft)	300 m (984 ft)	229 m (751 ft)	229 m (751 ft)	229 m (751 ft)	450 m (1,476 ft)	450 m (1,476 ft)
PHYSICAL CHARACTERISTICS										
Dimensions (WxHxD)	125 x 177 x 215 mm (4.9 x 6.9 x 8.5 in)	180 x 167 x 215 mm (7.1 x 6.6 x 8.4 in)	210 x 227 x 281 mm (8.3 x 8.9 x 11.1 in)	211 x 205 x 236 mm (8.3 x 8.1 x 9.3 in)	211 x 249 x 470 mm (8.3 x 9.8 x 18.5 in)	206 x 181 x 432 mm (8.1 x 7.1 x 17.0 in) ^③	253 x 181 x 431 mm (9.9 x 7.1 x 17.0 in) ^③	284 x 295 x 483 mm (11.2 x 11.6 x 19.0 in)	275 x 238 x 482 mm (10.8 x 9.4 x 19.0 in)	335 x 238 x 482 mm (13.2 x 9.4 x 19.0 in)
Weight	1.45 kg (3.2 lbs)	1.72 kg (3.8 lbs)	2.7 kg (5.95 lbs)	5.1 kg (11.2 lbs)	8.4 kg (18.5 lbs)	9.5 kg (21 lbs)	12.5 kg (27.7 lbs)	15.8 kg (34.9 lbs)	12.85 kg (28.4 lbs)	14.80 kg (32.6 lbs)
Operating Temperature	5 to 40° C (41 to 104° F)	5 to 40° C (41 to 104° F)	5 to 40° C (41 to 104° F)	5 to 40° C (40 to 104° F)	5 to 40° C (40 to 104° F)	5 to 40° C (41 to 104° F)	5 to 40° C (41 to 104° F)	5 to 40° C (41 to 104° F)	5 to 40° C (41 to 104° F)	5 to 40° C (41 to 104° F)
Operating Humidity	20 to 80% Non-Condensing	20 to 80% Non-Condensing	20 to 80% Non-Condensing	10 to 80% Non-Condensing	10 to 80% Non-Condensing	20 to 80% Non-Condensing	20 to 80% Non-Condensing	20 to 80% Non-Condensing	10 to 90% Non-Condensing	10 to 90% Non-Condensing
SOFTWARE										
Command Languages	IPL, DP, Zsim (ZPL), Dsim (DPL)	IPL, DP, Zsim (ZPL), Dsim (DPL)	IPL, DP, Zsim (ZPL), Dsim (DPL)	IPL, DP, Zsim (ZPL), Dsim (DPL), ESIm (EPL)	IPL, DP, Zsim (ZPL), Dsim (DPL), ESIm (EPL)	IPL, DP, Zsim (ZPL), Dsim (DPL)	IPL, DP, Zsim (ZPL), Dsim (DPL)	IPL, DP, Zsim (ZPL), Dsim (DPL)	IPL, DP, Zsim (ZPL), Dsim (DPL)	IPL, DP, Zsim (ZPL), Dsim (DPL)
Device Management Supported	Integrated Web Interface, SmartSystems™, Wavelink® Avalanche™	Integrated Web Interface, SmartSystems™, Wavelink® Avalanche™	Integrated Web Interface, SmartSystems™, Wavelink® Avalanche™	Integrated Web Interface, SmartSystems™, Wavelink® Avalanche™	Integrated Web Interface, SmartSystems™, Wavelink® Avalanche™	Integrated Web Interface, SmartSystems™, Wavelink® Avalanche™	Integrated Web Interface, SmartSystems™, Wavelink® Avalanche™	Integrated Web Interface, SmartSystems™, Wavelink® Avalanche™	Integrated Web Interface, SmartSystems™, Wavelink® Avalanche™	Integrated Web Interface, SmartSystems™, Wavelink® Avalanche™
Smart Printing Languages	C# for Printers, Fingerprint	C# for Printers, Fingerprint	C# for Printers, Fingerprint	C# for Printers, Fingerprint	C# for Printers, Fingerprint	C# for Printers, Fingerprint	C# for Printers, Fingerprint	C# for Printers, Fingerprint	Fingerprint	Fingerprint
ERP Compatibility	Certified Device Type and XML-Enabled for SAP® All, Oracle® WMS	Certified Device Type and XML-Enabled for SAP® All, Oracle® WMS	Certified Device Type and XML-Enabled for SAP® All, Oracle® WMS	Certified Device Type and XML-Enabled for SAP® All, Oracle® WMS	Certified Device Type and XML-Enabled for SAP® All, Oracle® WMS	Certified Device Type and XML-Enabled for SAP® All, Oracle® WMS	Certified Device Type and XML-Enabled for SAP® All, Oracle® WMS	Certified Device Type and XML-Enabled for SAP® All, Oracle® WMS	XML-Enabled for SAP® All, Oracle® WMS	XML-Enabled for SAP® All, Oracle® WMS
ADDITIONAL FEATURES										
Optional, via User Installable Module										
Communication Interfaces										
USB	Standard (USB Device & Host)	Standard (USB Device & Host)	Standard (USB Device & Host)	Standard (USB Device & Host)	Standard (USB Device & Host)	Standard (USB Device & Host)	Standard (USB Device & Host)	Standard (2 USB Device & 2 Host)	Standard (USB Device & Host)	Standard (USB Device & Host)
Parallel	Optional, via USB Adapter	Optional, via USB Adapter	Optional, via USB Adapter	Optional, via USB Adapter	Optional, via USB Adapter	Optional	Optional	Optional	Optional	Optional
Serial	Optional, via USB Adapter	Optional, via USB Adapter	Optional, via USB Adapter	Optional, via USB Adapter	Optional, via USB Adapter	Standard	Standard	Standard	Standard	Standard
Ethernet (Wired)	Optional, via User Installable Module	Optional, via User Installable Module	Optional, via User Installable Module	Optional, via User Installable Module	Optional, via User Installable Module	Standard	Standard	Standard	Standard	Standard
Wireless LAN 802.11	Optional, via User Installable Module	Optional, via User Installable Module	Optional, via User Installable Module	Optional, via User Installable Module	Optional, via User Installable Module	Optional (b/g/n)	Optional (b/g/n)	Optional (b/g/n)	Optional (b/g)	Optional (b/g)
Wireless Bluetooth®	Optional, via User Installable Module	Optional, via User Installable Module	Optional, via User Installable Module	Optional, via User Installable Module	Optional, via User Installable Module	Optional	Optional	Optional	N/A	N/A
Media Handling										
Cutter	Optional, via User Installable Module	Optional, via User Installable Module	Optional, via User Installable Module	Optional, via User Installable Module	Optional, via User Installable Module	Optional	Optional	Optional	Optional	Optional
Self-Strip with Liner Take-Up	Optional, via User Installable Dispenser	Optional, via User Installable Dispenser	Optional, via User Installable Dispenser	Optional, via User Installable Dispenser	Optional, via User Installable Dispenser	Optional	Optional	Optional	Optional	Optional
Rewinder	N/A	N/A	N/A	N/A	N/A	Internal	Internal	Internal & Full Batch	Internal	Internal
Real Time Clock	Integrated Option (on LCD Models)	Integrated Option (on LCD Models)	Integrated Option (on LCD Models)	Integrated Option (on LCD Models)	Integrated Option (on LCD Models)	Optional	Optional	Optional	Optional	Optional

^① Optional thick media spring kit required for media thicker than 5.9 mil.

^② Label roll diameters of up to 213 mm (8.38 in) are supported with dome door, baggage tag door, and short door configurations of PM23c—otherwise, the maximum label roll diameter is 152 mm (6 in).

^③ Printer dimensions vary by door configuration—the value shown is with the standard door.

^④ Label roll diameters of up to 213 mm (8.38 in) are supported with dome door and short door configurations of PM43c—otherwise, the maximum label roll diameter is 152 mm (6 in).

Honeywell Mobile Printer Comparison



Printer Type	MOBILE RECEIPT PRINTERS					MOBILE LABEL PRINTERS				
PRODUCT MODEL	PR2	PR3	PB21	PB31	PB51	PB22	PB32	PB50	PW50	6822
Product Description	2" Durable Mobile Receipt Printer	3" Durable Mobile Receipt Printer	2" Rugged Mobile Receipt Printer	3" Rugged Mobile Receipt Printer	4" Rugged Mobile Receipt Printer	2" Rugged Mobile Label Printer	3" Rugged Mobile Label Printer	4" Rugged Mobile Label Printer	4" Commercial Mobile Workboard Printer	Full-Page Commercial Mobile Workboard Printer
Print Technology	Direct Thermal	Direct Thermal	Direct Thermal	Direct Thermal	Direct Thermal	Direct Thermal	Direct Thermal	Direct Thermal	Direct Thermal	Dot Matrix
Supported Honeywell Mobile Computers	All CNx, CKx, CSx, CVx Series	All CNx, CKx, CSx, CVx Series	All CNx, CKx, CSx, CVx Series	All CNx, CKx, CSx, CVx Series	All CNx, CKx, CSx, CVx Series	All CNx, CKx, CSx, CVx Series	All CNx, CKx, CSx, CVx Series	All CNx, CKx, CSx, CVx Series	CN3/e, CN4/e, CN70/e Series	CN3/e, CN4/e, CN70/e Series
BATTERY										
Type	Lithium Ion, 7.4 V, 2.2 Ah	Lithium Ion, 7.4 V, 2.2 Ah	Lithium Ion, 7.4 V, 2.3 Ah	Lithium Ion, 7.4 V, 2.3 Ah	Lithium Ion, 14.8 V, 2.2 Ah	Lithium Ion, 7.4 V, 2.3 Ah	Lithium Ion, 7.4 V, 2.3 Ah	Lithium Ion, 14.8 V, 2.2 Ah	Lithium Ion, 14.8 V, 2.2 Ah	Lead Acid, 12 V, 2.3 Ah
Recharge Time	4 to 6 hrs	4 to 6 hrs	In Dock: 4 hrs In Printer: 6 hrs	In Dock: 4 hrs In Printer: 6 hrs	In Dock: 4 hrs In Printer: 6 hrs	In Dock: 4 hrs In Printer: 6 hrs	In Dock: 4 hrs In Printer: 6 hrs	In Dock: 4 hrs In Printer: 6 hrs	In Dock: 4 hrs In Printer: 6 hrs	60 mins
Smart Battery	Optional	Optional	N/A	N/A	N/A	N/A	N/A	N/A	N/A	N/A
ENVIRONMENTAL										
Drop Specification (to Concrete)	1.5 m (5 ft) ①	1.5 m (5 ft) ①	2 m (6.5 ft)	2 m (6.5 ft)	1.5 m (5 ft)	2 m (6.5 ft)	2 m (6.5 ft)	1.5 m (5 ft)	1.2 m (4 ft)	50 cm (2 ft) ②
IP Rating	IP54 ①	IP54 ①	IP54 (Excludes Paper Path)	IP54 (Excludes Paper Path)	IP54 (Excludes Paper Path)	IP54 (Excludes Paper Path)	IP54 (Excludes Paper Path)	IP54 (Excludes Paper Path)	IP54 (Excludes Paper Path)	N/A
USER INTERFACE										
Display	3 Multi-Function Status LEDs	3 Multi-Function Status LEDs	2-Line LCD	2-Line LCD	2-Line LCD	2-Line LCD	2-Line LCD	2-Line LCD	3 Icons	3 Icons, 1 LED
Input	Power and Feed Buttons	Power and Feed Buttons	Standby, Feed, Setup and Info Buttons	Standby, Feed, Setup and Info Buttons	Standby, Feed, Setup and Info Buttons	Standby, Feed, Setup and Info Buttons	Standby, Feed, Setup and Info Buttons	Standby, Feed, Setup and Info Buttons	Standby and Feed Buttons	Form Feed, Line Feed, Set Page
Audio	N/A	N/A	Startup and Button Press Alerts	Startup and Button Press Alerts	Startup and Button Press Alerts	Startup and Button Press Alerts	Startup and Button Press Alerts	Startup and Button Press Alerts	Startup, Button Press, Error and Hardware Change Alerts	Startup, Error and Hardware Change Alerts
PRINT SPECIFICATIONS										
Max. Print Speed	56 mm/s (2 ips)	56 mm/s (2 ips)	101 mm/s (4 ips)	101 mm/s (4 ips)	101 mm/s (4 ips)	101 mm/s (4 ips)	101 mm/s (4 ips)	101 mm/s (4 ips)	100 mm/s (4 ips)	2 ppm
Resolution	8 dots/mm (203 dpi)	8 dots/mm (203 dpi)	8 dots/mm (203 dpi)	8 dots/mm (203 dpi)	8 dots/mm (203 dpi)	8 dots/mm (203 dpi)	8 dots/mm (203 dpi)	8 dots/mm (203 dpi)	8 dots/mm (203 dpi)	Full Page
Max. Print Width	48 mm (1.89 in)	72 mm (2.83 in)	48 mm (1.89 in)	72 mm (2.83 in)	108 mm (4.25 in)	48 mm (1.89 in)	72 mm (2.83 in)	108 mm (4.25 in)	108 mm (4.25 in)	21.5 cm (8.5 in)
MEDIA CHARACTERISTICS										
Supported Media	Receipt	Receipt	Label or Receipt	Label or Receipt	Label or Receipt	Label or Receipt	Label or Receipt	Label or Receipt	Receipt (Coated or Uncoated)	1 to 3 Ply, Fan Fold, 7.5" to 8.5" by 11" Stock
Media Width	Fixed: 57 mm (2.25 in)	Fixed: 79 mm (3.125 in)	Fixed: 57 mm (2.25 in)	Fixed: 83 mm (3.25 in)	50.8 to 111 mm (2.0 to 4.39 in)	26 to 55 mm (1.0 to 2.2 in)	31 to 84 mm (1.2 to 3.3 in)	50.8 to 111 mm (2.0 to 4.39 in)	111 mm (4.375 in)	215 mm (8.5 in)
Media Thickness	2.36 to 4 mil	2.36 to 4 mil	2 to 6.5 mil	2 to 6.5 mil	2 to 6.5 mil	2 to 6.5 mil	2 to 6.5 mil	2 to 6.5 mil	2 to 4.4 mil	3-Ply Form
Media Roll Max. Diameter (OD)	40.6 mm (1.6 in)	40.6 mm (1.6 in)	57 mm (2.25 in)	67 mm (2.65 in)	67 mm (2.65 in)	57 mm (2.25 in)	67 mm (2.65 in)	67 mm (2.65 in)	67 mm (2.65 in)	N/A
Media Roll Core Diameter (ID)	10 mm (0.4 in)	10 mm (0.4 in)	19 mm (0.75 in)	19 mm (0.75 in)	19 mm (0.75 in)	19 mm (0.75 in) or 10 mm (0.4 in)	19 mm (0.75 in) or 10 mm (0.4 in)	19 mm (0.75 in) or 10 mm (0.4 in)	19 mm (0.75 in) or 10 mm (0.40 in)	N/A
Media Sensing	Continuous, Black Mark	Continuous, Black Mark	Continuous, Black Mark	Continuous, Black Mark	Continuous, Black Mark, Gap	Continuous, Black Mark, Gap	Continuous, Black Mark, Gap	Continuous, Black Mark, Gap	Continuous	N/A
Black Mark Location	Thermal Side Only	Thermal Side Only	Thermal Side Only	Thermal Side Only	Thermal or Non-Thermal Side	Thermal or Non-Thermal Side	Thermal or Non-Thermal Side	Thermal or Non-Thermal Side	N/A	N/A
PHYSICAL CHARACTERISTICS										
Dimensions (WxHxD)	103 x 61 x 139 mm (4.1 x 2.4 x 5.5 in)	127 x 58 x 156 mm (5.0 x 2.3 x 6.1 in)	101 x 176 x 71 mm (4.0 x 6.9 x 2.8 in)	127 x 182 x 81 mm (5.0 x 7.2 x 3.2 in)	160 x 174 x 79 mm (6.3 x 6.9 x 3.1 in)	101 x 176 x 71 mm (4.0 x 6.9 x 2.8 in)	127 x 182 x 81 mm (5.0 x 7.2 x 3.2 in)	160 x 174 x 79 mm (6.3 x 6.9 x 3.1 in)	310 x 180 x 80 mm (12.2 x 7.0 x 3.2 in)	419 x 130 x 381 mm (16.5 x 5.13 x 15.0 in)
Weight (with Battery)	472 g (16.7 oz)	583 g (20.6 oz)	678 g (23.9 oz)	828 g (29.2 oz)	1.19 kg (42 oz)	678 g (23.9 oz)	828 g (29.2 oz)	1.19 kg (42 oz)	1.68 kg (59.5 oz)	5.67 kg (12.3 lbs)
Operating Temperature	-10 to 50° C (14 to 122° F)	-10 to 50° C (14 to 122° F)	-15 to 50° C (5 to 122° F)	-15 to 50° C (5 to 122° F)	-15 to 50° C (5 to 122° F)	-15 to 50° C (5 to 122° F)	-15 to 50° C (5 to 122° F)	-15 to 50° C (5 to 122° F)	-20 to 50° C (-4 to 122° F)	-20 to 45° C (-4 to 113° F)
Operating Humidity	20 to 85% Non-Condensing	20 to 85% Non-Condensing	10 to 90% Non-Condensing	10 to 90% Non-Condensing	10 to 90% Non-Condensing	10 to 90% Non-Condensing	10 to 90% Non-Condensing	10 to 90% Non-Condensing	10 to 90% Non-Condensing	5 to 95% Non-Condensing
SOFTWARE										
Command Languages	ESC/P (Line Print, Easy Print Modes), CSim (CPCL), XSim (Ex-PCL)	ESC/P (Line Print, Easy Print Modes), CSim (CPCL), XSim (Ex-PCL)	IPL, DP, Fingerprint, Zsim (ZPL2), Dsim (DPL), Csim (CPCL), ESC/P	IPL, DP, Fingerprint, Zsim (ZPL2), Dsim (DPL), Csim (CPCL), ESC/P	IPL, DP, Fingerprint, Zsim (ZPL2), Dsim (DPL), Csim (CPCL), ESC/P	IPL, DP, Fingerprint, Zsim (ZPL2), Dsim (DPL), Csim (CPCL), ESC/P	IPL, DP, Fingerprint, Zsim (ZPL2), Dsim (DPL), Csim (CPCL), ESC/P	IPL, DP, Fingerprint, Zsim (ZPL2), Dsim (DPL), Csim (CPCL), ESC/P	ESC-P Command Sets (Line Print, Easy Print Modes)	Line Print, Easy Print Modes
Device Management Supported	PrintSet, SmartSystems	PrintSet, SmartSystems	PrintSet, SmartSystems	PrintSet, SmartSystems	PrintSet, SmartSystems	PrintSet, SmartSystems	PrintSet, SmartSystems	PrintSet, SmartSystems	PrintSet, SmartSystems	6822 Configuration Utility
Smart Printing Languages	N/A	N/A	Fingerprint	Fingerprint	Fingerprint	Fingerprint	Fingerprint	Fingerprint	Fingerprint	N/A
ADDITIONAL FEATURES										
Communication Interfaces										
USB	Standard (USB Device)	Standard (USB Device)	Standard (USB Device)	Standard (USB Device)	Standard (USB Device)	Standard (USB Device)	Standard (USB Device)	Standard (USB Device)	Standard (USB Device)	N/A
Serial	Standard	Standard	Standard	Standard	Standard	Standard	Standard	Standard	Standard	N/A
Wireless LAN 802.11	Optional (b/g)	Optional (b/g)	Optional (b/g)	Optional (b/g)	Optional (b/g)	Optional (b/g)	Optional (b/g)	Optional (b/g)	N/A	N/A
Wireless Bluetooth®	Optional (v2, Class II)	Optional (v2, Class II)	Optional (v2, Class I)	Optional (v2, Class I)	Optional (v2, Class I)	Optional (v2, Class I)	Optional (v2, Class I)	Optional (v2, Class I)	Standard (Class I)	Optional
Other Features										
Card Reader	Optional	Optional	Optional	Optional	N/A	N/A	N/A	N/A	Optional	N/A
FlexDock Compatible	Yes	Yes	N/A	N/A	N/A	N/A	N/A	N/A	N/A	N/A

① Optional protective case increases drop specification to 1.5 m (5.0 ft) and IP rating to IP54.

② 6822P only.