

ViewPoint

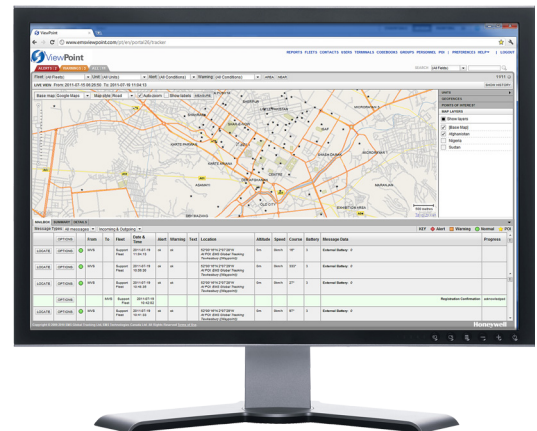
Advanced Tracking and Mapping Application

ViewPoint is an advanced web-based application from Honeywell Global Tracking that allows governments and organizations of all sizes to track and monitor high-value mobile assets such as vehicle fleets, vessels, cargo containers and personnel – even in the most remote and hostile areas of the world.

In ViewPoint, each terminal is visible in real-time on a highly interactive map. In addition to using standard maps from Google and Bing, ViewPoint supports custom map layers such as security hot-spots, maritime charts, and EEZ boundaries. This is particularly important in regions where default maps provide an insufficient amount of detail. As ViewPoint is capable of displaying thousands of assets at a time, the application offers several data filters, making it easy to display only a sub-set of active units based on fleet, area, distance, warning status or similar parameters.

It's easy to create any number of geofences in ViewPoint, using a spatially indexed Geographic Information System (GIS) database and a powerful rules engine. Geofences are often used to indicate safe routes for vehicles and personnel on the ground. Should a vehicle venture outside of the geofence area, an operator will automatically be notified via email or SMS.

ViewPoint works with the Osprey Personal Tracker as well as Honeywell Global Tracking's SAT, TAM and PDT series of satellite terminals, and can be coupled with a range of flexible satellite airtime packages.



Features

- **Global Coverage:** Offers worldwide web-based tracking, messaging and alerting
- **Interactive:** Allows custom map layers to be added to existing Google and Bing maps, increasing clarity by using filters to view and sort assets by distance, fleet name, asset status and more
- **Automated Alerts:** Immediately sends automated notifications to multiple contacts via SMS and email based on a range of geofence parameters (e.g., route, curfew, and checkpoint)
- **Communicate:** Sends text messages directly to groups of terminals without going through central command
- **Quick Calculation:** Quickly calculates point-to-point distances and route lengths using the measurement tool, increasing accuracy when communicating with others
- **Easily Integrated:** ViewPoint works with many enterprise resource planning (ERP) systems and enables a common operating picture by clearly tracking, labeling and monitoring all assets

ViewPoint Technical Specifications

Capabilities/Applications

Geofencing

- Warning – warning raised if a unit travels inside a warning area
- Alert – alert raised if a unit travels inside an alert area
- Safe – warning raised if a unit travels outside all safe areas
- Route – alert or warn if a unit travels outside defined route corridor
- Curfew – apply specific curfew times to any warning or alert geofence
- Waypoint – notification when a unit enters and departs a geofence
- Checkpoint – notification raised if a unit is late arriving at a waypoint (applied on a per-unit basis)
- Overdue warning – unit has stopped transmitting
- Static warning – unit is still reporting, but has stopped moving

Communications

- Worldwide web-based tracking, messaging and alerting
 - Alert notification to multiple contacts via SMS and email
 - Terminal-to-terminals messaging*
 - Send text messages and configuration messages to selected groups of terminals*
 - Up to 450 customizable, pre-defined messages*
 - User can create a personal address book*
 - Synchronization “over-the-air” of pre-defined messages and address book*
- *device dependent

Mapping

- Highly interactive and extendable mapping
- Spatially indexed GIS database for rapid location of terminals or points-of-interest (POI) on the map
- Google and Bing base layer maps
- Detailed mapping of remote and potentially dangerous or hostile areas
- Operator selectable detail map layers (in addition to base layer maps)
- Define and precisely locate your own POI
- Customize map views using POI
- View: current position, recent events and tracking history
- Point-to-point distance and route length measurement tool

Fleet Management

- Locate by alert status, fleet name, group or user-defined attributes or terminal name
- Request current location for any terminal in the fleet
- Remote updating of GPS reporting intervals
- Quickly locate and connect with the nearest Personal Tracker in group or fleet
- Advanced report generation wizard for:
 - Individual units, units matching user-defined criteria or whole fleet
 - Schedule or on-demand reports
 - CSV, PDF and HTML format
 - Idling, speeding, mileage, time in geofence, summary information

For more information:

www.gt.honeywell.com

Honeywell Global Tracking

Miller Court, Severn Drive
Tewkesbury, Gloucestershire
GL20 8DN UK
www.honeywell.com

