



# Charge-Only Base

## COB01

---

### Installation Guide



COB01-INST

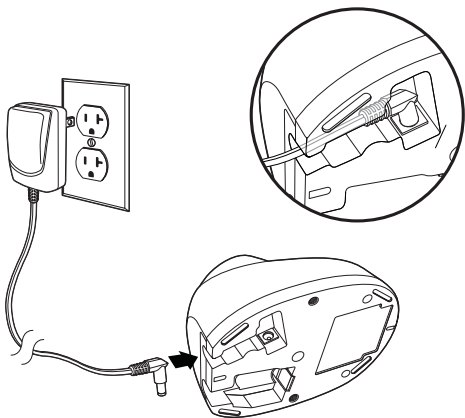
Rev D  
9/15

## ***Introduction***

Honeywell's Charge-Only Base can fully charge a scanner in less than eight hours (typically 4.5 hours), maximizing uptime in any application.

*Note: When a scanner is placed into the Charge-Only Base, the battery will charge. Please note that the Charge-Only Base will not facilitate communication with the host system or other scanners.*

## ***Installation***



Connect the right angle power adapter to the Charge-Only Base, then plug the power supply into an AC power outlet. Make sure the AC power outlet voltage is the same as the power supply.

***Use only a Listed Limited Power Source (LPS) or Class 2 type power supply with output rated 5 to 5.2Vdc, 1A. We recommend use of Honeywell power adapters. Use of any non-Honeywell power adapters may cause damage not covered by the warranty.***

## ***Operation and Indicators***

1. Place a scanner into the cradle to charge.
2. When a scanner is inserted, the green LED flashes according to the chart below. If the Green LED does not appear, check to make sure the scanner is seated completely in the charger with the battery contacts touching the contacts on the charger.
3. When the battery is completely charged, the charging indicator stops flashing and stays illuminated.

<b>LED Indicators</b>	
Off	Battery not detected
Slow flash	Pre-charge and charge
On	Charge completed
Fast flash	Charge suspended due to a fault condition

### ***Scanning While in Charge-Only Base***

Scan one of the following bar codes to program your scanner's behavior when it is in the Charge-Only Base.

**Scanning in Base On:** Keeps the scanner on and available for scanning while in the base. (When in Presentation Mode, this results in the scanner charging at the slowest rate.)



BT\_SIO1.

Scanning in Base On

**Scanning in Base Off:** Keeps the scanner on but unable to scan while in the base.



BT\_S100.

Scanning in Base Off

**Shut Down Scanner in Base:** Shuts down the scanner while in the base. (This results in the scanner charging at the fastest rate.)



BT\_S102.

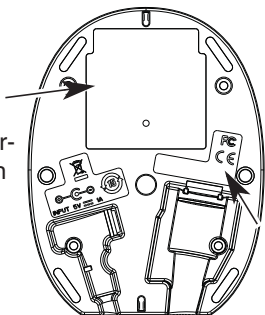
Shut Down Scanner in Base

## ***COB01 Product Specifications***

Dimensions (Typical):	
Height	3.2 inches (8.128cm)
Length	5.19 inches (13.183cm)
Width	3.98 inches (10.109cm)
Weight	6.3 oz (179g)
Voltage	4.5 to 5.5 volts
Current	1A
Charge Time	5 hours
Temperature Ranges:	
Operating	41° F to +104° F (5° C to +40° C)
Storage	-40° F to +158° F (-40° C to +70° C)
Humidity	Up to 95% non-condensing
Mechanical Drop	Operational after 50 drops from 3.28 feet (1 m) to concrete
Vibration	5G Peak from 22Hz to 300Hz
ESD Immunity	Up to 15kV direct air. Up to 8 kV indirect coupling plane
IP Rating	IP41, immunity of foreign particles and dripping water

## Required Safety Labels

Item Number,  
Serial  
Number and  
Revision Infor-  
mation location



Compliance  
Label loca-

## Cleaning the Charge-Only Base

Unplug the Charge-Only Base from the power supply before cleaning.

Clean the housing of the Charge-Only Base with a soft cloth or tissue dampened with water (or a mild detergent- water solution). If a detergent solution is used, rinse with a clean tissue dampened with water only.



***Never use solvents (e.g., alcohol or acetone) on the housing – solvents may damage the finish.***

## Technical Assistance

Contact information for technical support, product service, and repair can be found at [www.honeywellaidc.com](http://www.honeywellaidc.com).

## ***Limited Warranty***

Refer to [www.honeywellaidc.com/warranty\\_information](http://www.honeywellaidc.com/warranty_information) for your product's warranty information.

## ***Patents***

For patent information, refer to [www.honeywellaidc.com/patents](http://www.honeywellaidc.com/patents).

## ***Disclaimer***

Honeywell International Inc. ("HII") reserves the right to make changes in specifications and other information contained in this document without prior notice, and the reader should in all cases consult HII to determine whether any such changes have been made. The information in this publication does not represent a commitment on the part of HII.

HII shall not be liable for technical or editorial errors or omissions contained herein; nor for incidental or consequential damages resulting from the furnishing, performance, or use of this material. HII disclaims all responsibility for the selection and use of software and/or hardware to achieve intended results.

This document contains proprietary information that is protected by copyright. All rights are reserved. No part of this document may be photocopied, reproduced, or translated into another language without the prior written consent of HII.

© 2010-2015 Honeywell International Inc. All rights reserved.

Web Address: [www.honeywellaidc.com](http://www.honeywellaidc.com)