

Honeywell

THE POWER OF **CONNECTED**

Captuvo™ SL42(H)

Enterprise Sled for Apple® iPhone® 7, iPhone® 6, and
iPhone® 6s

Quick Start Guide



Getting Started

The Captuvo SL42(H) Enterprise Sled (Agency Model: SL-ES-G) used with the Apple iPhone® 7, iPhone 6, and iPhone 6s include an integrated imager for scanning all types of bar codes.

Note: *Honeywell is not an authorized Apple repair center. Please return only your sled to us for repair. Honeywell is not liable for any non-Honeywell product shipped to our repair center.*

Note: *Refer to your Apple iPhone documentation for important product and safety information.*

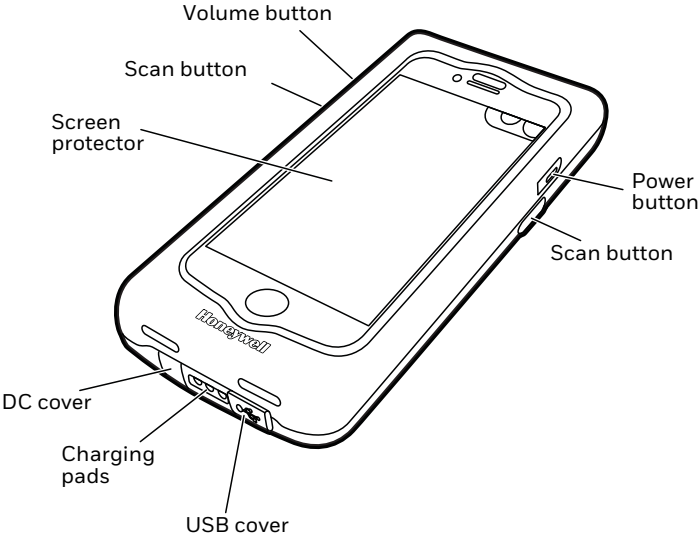
User Documentation

To download the sled documentation, visit www.honeywellaidc.com.

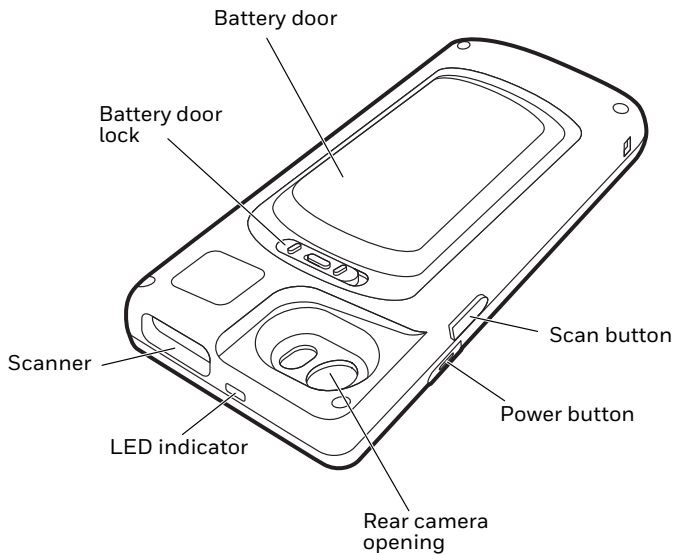
Application Software

You can create custom applications for your Captuvo SL42(H) sled. Refer to www.honeywellaidc.com/Captuvo/developer-resources.html for more information.

Front View



Back View



Insert the Battery



Ensure all components are dry prior to mating sleds/ batteries with peripheral devices. Mating wet components may cause damage not covered by the warranty.



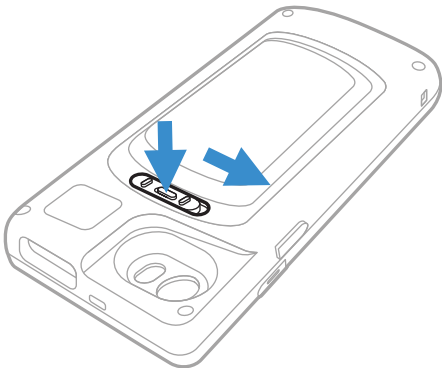
We recommend use of Honeywell Li-Ion battery packs. Use of any non-Honeywell battery may result in damage not covered by the warranty.



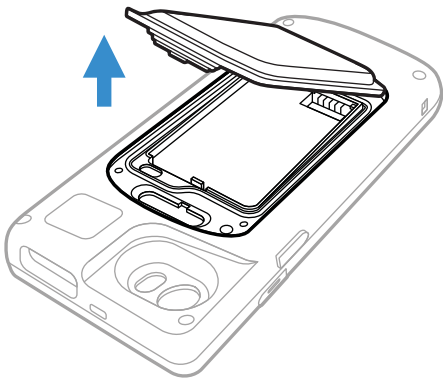
There is a danger of explosion if the batteries are incorrectly replaced. Replace the batteries with only the same or equivalent type recommended by the manufacturer. Dispose of used batteries according to the recycle program for batteries as directed by the governing agency for the country where the batteries are to be discarded.

To install the battery:

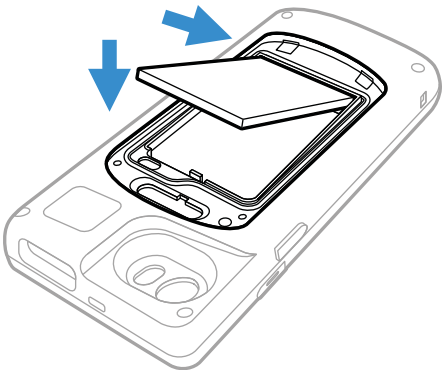
1. Open the battery door by pushing the button and sliding the lock to the unlock position.



2. Remove the battery door.



3. Insert the battery.



- Put the battery door back on, close it, and slide the lock to the lock position.

Battery Life

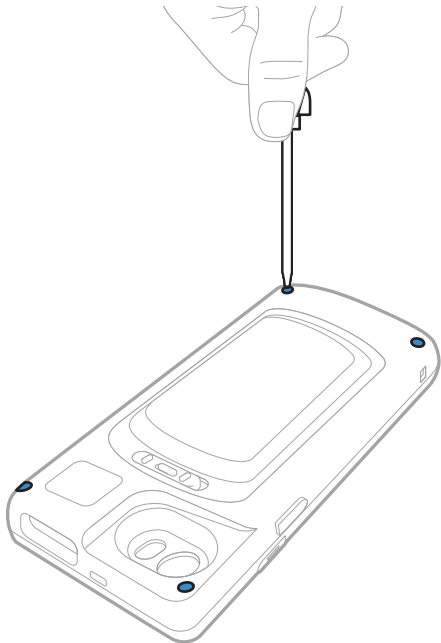
Battery Type	Time
Standard	Up to 10 hours
Extended	Up to 14 hours

Install/Remove the Apple iPhone in the Sled

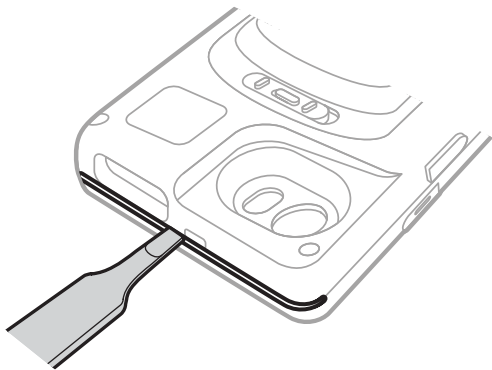


Warning: To protect your hands from injury, wear protective gloves when opening the Sled housing.

1. Loosen the 4 screws (TORX T6) on the back of the unit.



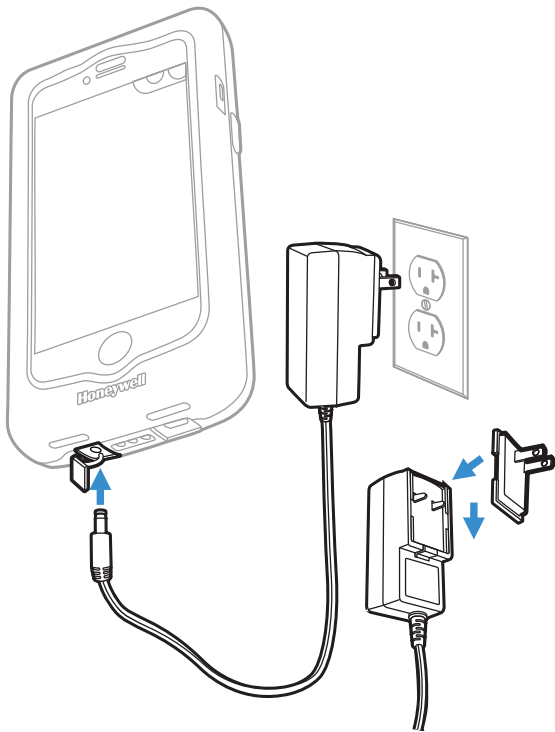
2. Using a plastic pry tool, insert the tool into the seam on the top of the device and pry open the housing.



3. Continue around the top and down the side of the housing with the pry tool, releasing the clips.
4. Once one side of the housing is open, pull the housing apart with your hands. You will need to use some force.
5. Place the iPhone into the sled and press the top and bottom housings together. Press strongly around the housing edges to clip the top and bottom together.
6. Tighten the four screws (torque: 2kgf.cm/1.73lb.f.in). Do not over tighten the screws.

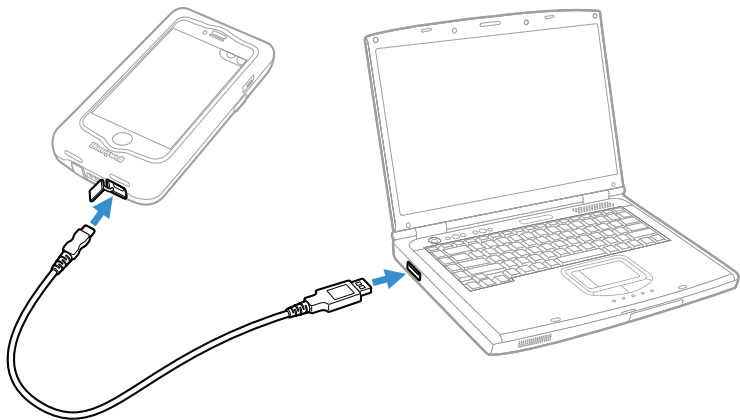
Charge Using Wall Adapter

Note: *If you use the wall adapter, both the sled and the iPhone charge simultaneously.*



Transfer Data Using a USB Cable

You can transfer data when the iPhone is in the sled and connected to a PC/laptop using a standard micro USB to USB cable. The sled and phone do not charge via USB.



LED Indicators

Sled connected to an external power source.

Color	Indication
Solid Green	Sled is charging, battery is more than 95% charged.
Solid Amber	Sled is charging, battery is 0% to 60% charged.
Blinking Red	Battery error.

Sled not connected to an external power source.

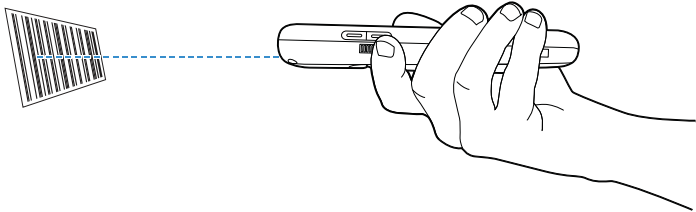
Color	Indication
Solid Green	Battery is 81-100% charged.
Blinking Green	Battery is 21-80% charged.
Solid Red	Battery is 0-20% charged
Blinking Red	Battery error.

Note: *If you change the default factory setting using the Captuvo SDK, the LED behavior is the same as the factory default behavior, except for a sled that is charging while connected to an external power source and between 60-90% charged. In this case, the LED pulses green.*

Honeywell Price Check Method

1. Download the Honeywell Price Check application from the Apple App StoreSM.
2. Scan a bar code.

Note: *This application is for demonstration purposes only and does not process any data.*



Healthcare Housing Cleaning Directions

The following cleaning solutions have been tested to assure safe cleaning of your sled's disinfectant-ready housing. They are the only solutions approved for use with this sled.

- 409® Blue
- Isopropyl Alcohol Wipes (70%)
- Sani-Cloth® Bleach Wipes
- Sani-Cloth® HB
- Sani-Cloth® Plus
- Super Sani-Cloth®
- Sani-Cloth® AF3
- Virex® 256
- Windex® Blue



Damage caused by the use of cleaners other than those listed above may not be covered by the warranty.

Operating Temperature

The maximum operating temperature range for the sled is 0°C to 35°C (32°F to 95°F).

Support

To search our knowledge base for a solution or to log into the Technical Support portal and report a problem, go to www.hsmcontactsupport.com.

User Documentation

For the user guide and other documentation, go to www.honeywellaidc.com.

Limited Warranty

For warranty information, go to www.honeywellaidc.com and click **Get Resources > Product Warranty**.

Patents

For patent information, see www.hsmpats.com.

Trademarks

Apple and iPhone are trademarks of Apple Inc., registered in the U.S. and other countries. App Store is a service mark of Apple Inc.

“Made for iPhone” means that an electronic accessory has been designed to connect specifically to an iPhone and has been certified by the developer to meet Apple performance standards. Apple is not responsible for the operation of this device or its compliance with safety and regulatory standards. Please note that the use of this accessory with an iPhone may affect wireless performance.

Disclaimer

Honeywell International Inc. (“HII”) reserves the right to make changes in specifications and other information contained in this document without prior notice, and the reader should in all cases consult HII to determine whether any such changes have been made. The information in this publication does not represent a commitment on the part of HII.

HII shall not be liable for technical or editorial errors or omissions contained herein; nor for incidental or consequential damages resulting from the furnishing, performance, or use of this material. HII disclaims all responsibility for the selection and use of software and/or hardware to achieve intended results.

This document contains proprietary information that is protected by copyright. All rights are reserved. No part of this document may be photocopied, reproduced, or translated into another language without the prior written consent of HII.

Copyright © 2017 Honeywell International Inc. All rights reserved.